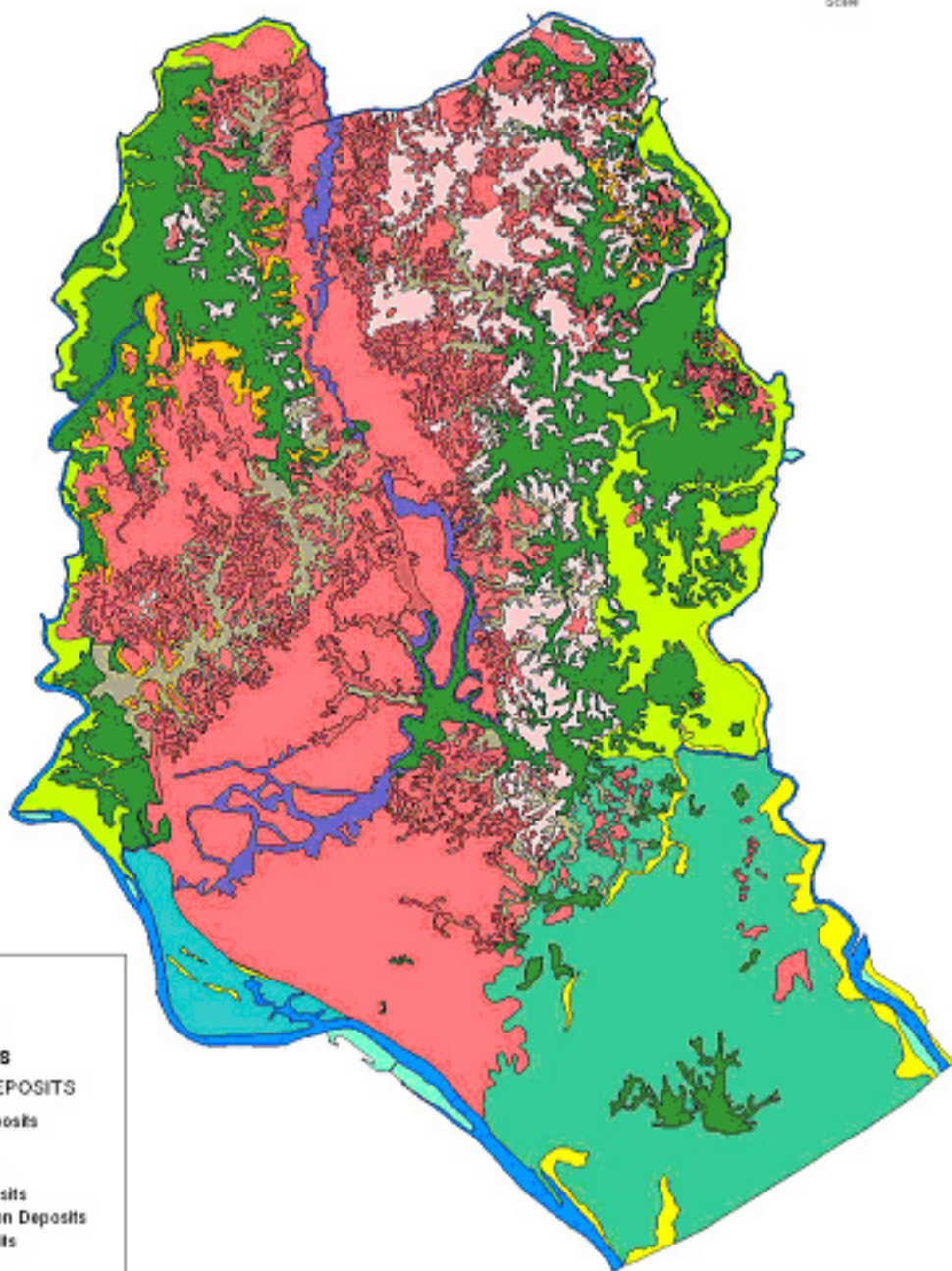
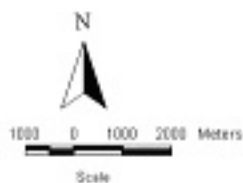


GEOLOGICAL SURVEY OF BANGLADESH (GSB)



**LEGENED**

**GEOLOGICAL UNITS**

**HOLOCENE DEPOSITS**

**A. FLUVIO - TIDAL DEPOSITS**

- Natural Levee Deposits
- Bar Deposits
- Point Bar Deposits
- Back Swamp Deposits
- Swamp / Depression Deposits
- Flood Plain Deposits
- Valley Fill Deposits

**B. SLOPE / ALLUVIAL DEPOSITS**

- Deep Alluvial Gully Deposits
- Shallow Alluvial Gully Deposits

**PLEISTOCENE DEPOSITS**

**C. MODHUPUR CLAY DEPOSITS**

- Upper Modhupur Clay Deposits
- Lower Modhupur Clay Deposits
- Modhupur Slope Deposits

**OTHERS**

- Water



Source: Aerial Photographs (1993-94)

Prepared by: GSB under Comprehensive Dhaka Management Programme (CDMP)

**GEOLOGICAL MAP OF DHAKA CITY CORPORATION AND SURROUNDING AREAS**